

STRAIN INSULATORS (ANSI Standard Type)

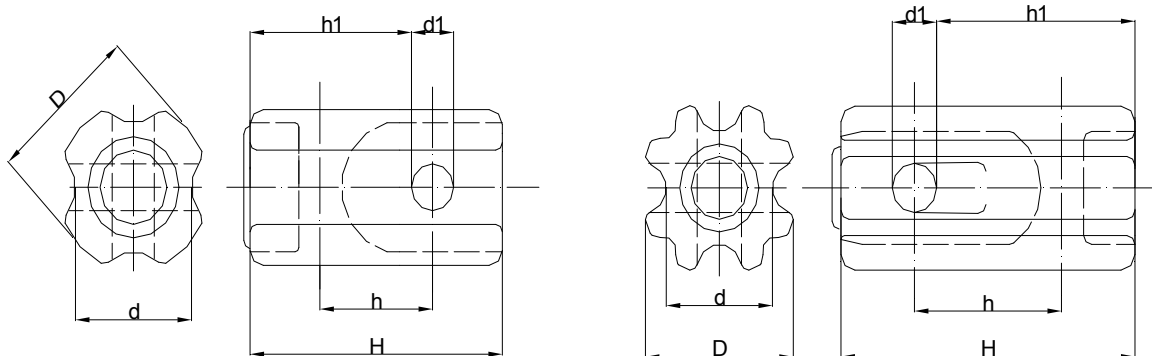


Fig 1

Fig 2

STANDARD PARTICULARS

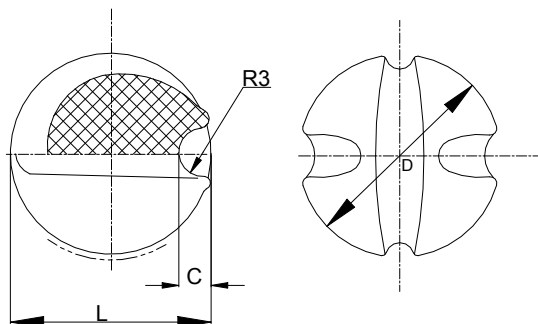
| Fig. No. | | 1 | | | 2 |
|------------------------------|--------------------|------------|------------|------------|------------|
| ANSI Class | | 54-1 | 54-2 | 54-3 | 54-4 |
| Nominal System Voltage/KV | | 2.2 | 4.4 | 6.6 | 6.6 |
| Main Dimensions/in | H | 3-1/2 | 4-1/4 | 5-1/2 | 6-3/4 |
| | h | 1-3/4 | 2-1/4 | 3-1/8 | 2-5/8 |
| | h1 | 2-1/2Max | 3 Max | 4-1/16 | 4-1/2 |
| | D | 5/8 | 2-7/8 | 3-3/8 | 3-1/2 |
| | d | 1-3/4 | 2-1/8 | 2-3/8 | 2-3/8 |
| | d1 | 2-1/2 | 7/8 | 1 | 1 |
| Tension Strength/lb(KN) | | 10,000(44) | 12,000(53) | 20,000(89) | 20,000(89) |
| Average Flashover Voltage/KV | Low-frequency(Dry) | 25 | 30 | 35 | 40 |
| | Low-frequency(Wet) | 12 | 15 | 18 | 23 |
| Leakage Distance/in(mm) | | 1-5/8(41) | 1-7/8(48) | 2-1/4(57) | 3(76) |
| Net Weight/lb(kg) | | 0.76(0.35) | 1.5(0.68) | 2.9(1.3) | 4.1(1.9) |

Note: In tension test, two loops of suitable wire ropes are used and glaze chips or partial porcelain cracks should be allowed.

Standard Specification: ANSI C29.4

HIGH VOLTAGE EGG TYPE STRAIN INSULATOR

(ANSI Standard Type)



STANDARD PARTICULARS

| Cat. No. | | DJ-1 | DJ-2 | DJ-3 | DJ-4 | DJ-5 | DJ-6 | DJ-7 |
|------------------------|---|------|------|------|------|-------|-------|-------|
| Dimensions-mm | D | 62 | 79 | 98 | 116 | 144 | 168 | 184 |
| | L | 65 | 81 | 104 | 122 | 150 | 174 | 194 |
| | C | 11 | 14 | 17 | 20 | 28 | 34 | 38 |
| | R | 7 | 9 | 10 | 12 | 16 | 21 | 24 |
| Testing Voltage-KV | | 5 | 5 | 5 | 10 | 15 | 15 | 20 |
| Transverse strength-kg | | 3000 | 4500 | 6500 | 9000 | 13000 | 24000 | 30000 |
| Weight (approx)-kg | | 0.25 | 0.25 | 1.05 | 1.70 | 3.30 | 4.70 | 6.50 |

Brown glazed.

STRAIN INSULATORS (AS Standard Type)

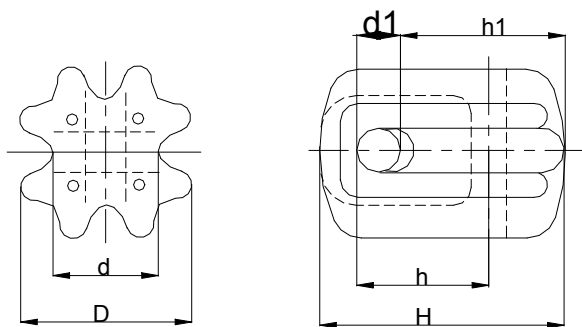


Fig 1

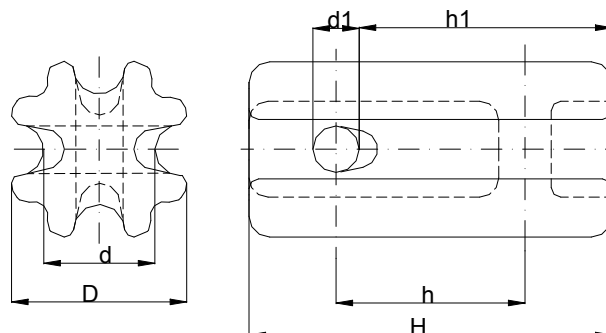


Fig2

STANDARD PARTICULARS

| Fig. No. | | 1 | 2 | 2 | 2 |
|--------------------------------------------|----|-----|-----|-----|-----|
| Class | | GY1 | GY2 | GY3 | GY4 |
| Dimensions, mm | H | 90 | 146 | 216 | 280 |
| | h | 48 | 73 | 89 | 89 |
| | h1 | 60 | 99 | 133 | 165 |
| | D | 68 | 73 | 115 | 115 |
| | d | 40 | 44 | 67 | 67 |
| | d1 | 16 | 22 | 38 | 38 |
| Power Frequency Withstand Voltage (Wet),KV | | 10 | 15 | 20 | 30 |
| Tension Failing Load, KN | | 27 | 71 | 222 | 222 |
| Net Weight, Each, Approx., kg | | 0.6 | 1.1 | 4.3 | 5.7 |

Standard Specification: AS 3609